

How to change 6mm lens to 3.6mm lens

1. Pull the sunlight shell back a bit and reveal the glass ring. (Picture 1 & Picture 2)



Picture 1



Picture 2

2. Rotate the glass ring anticlockwise and take off it.



Picture 3

3. Take down the two screws on the IR lights board.



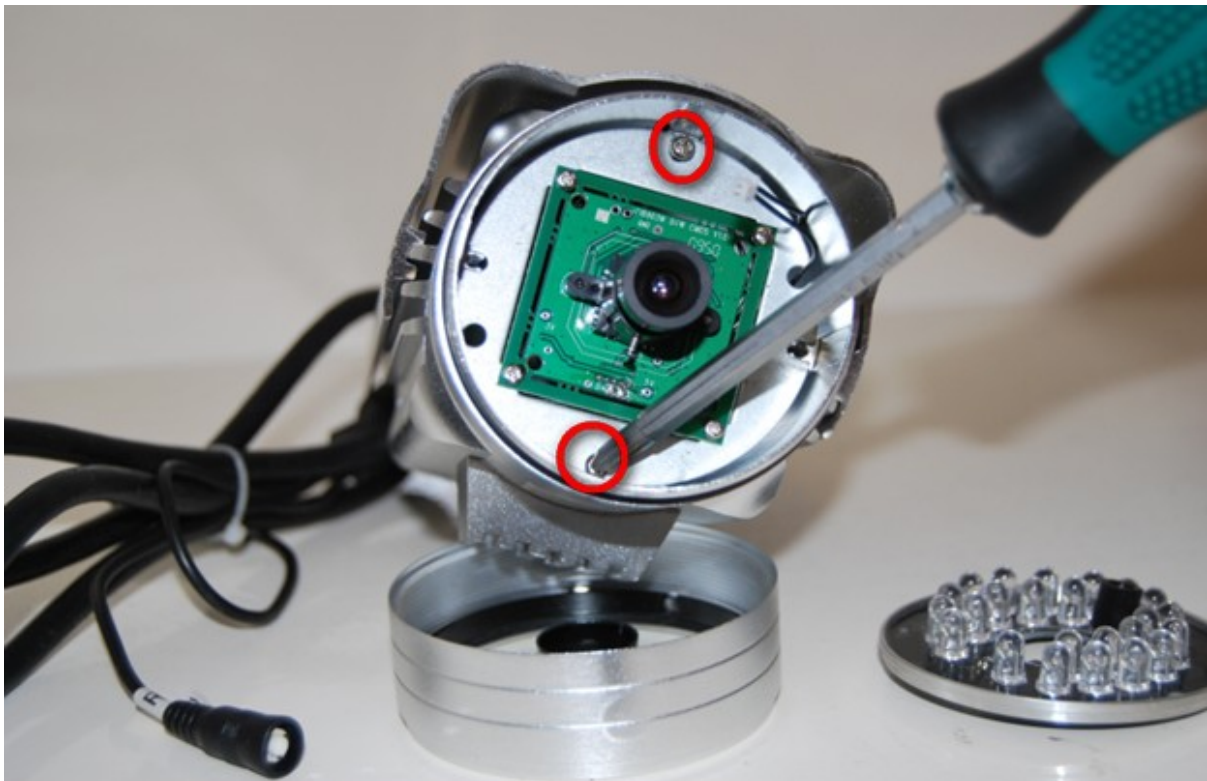
Picture 4

4. Take down the IR lights board and then take down the black sun-shade phomi carefully.



Picture 5

5. Take down the two screws which used to fix the lens board, when you get the lens board out, please notice which is the correct direction of the lens board. ("F18903W 04W CMOS V1.0"—These words face up)



Picture 6

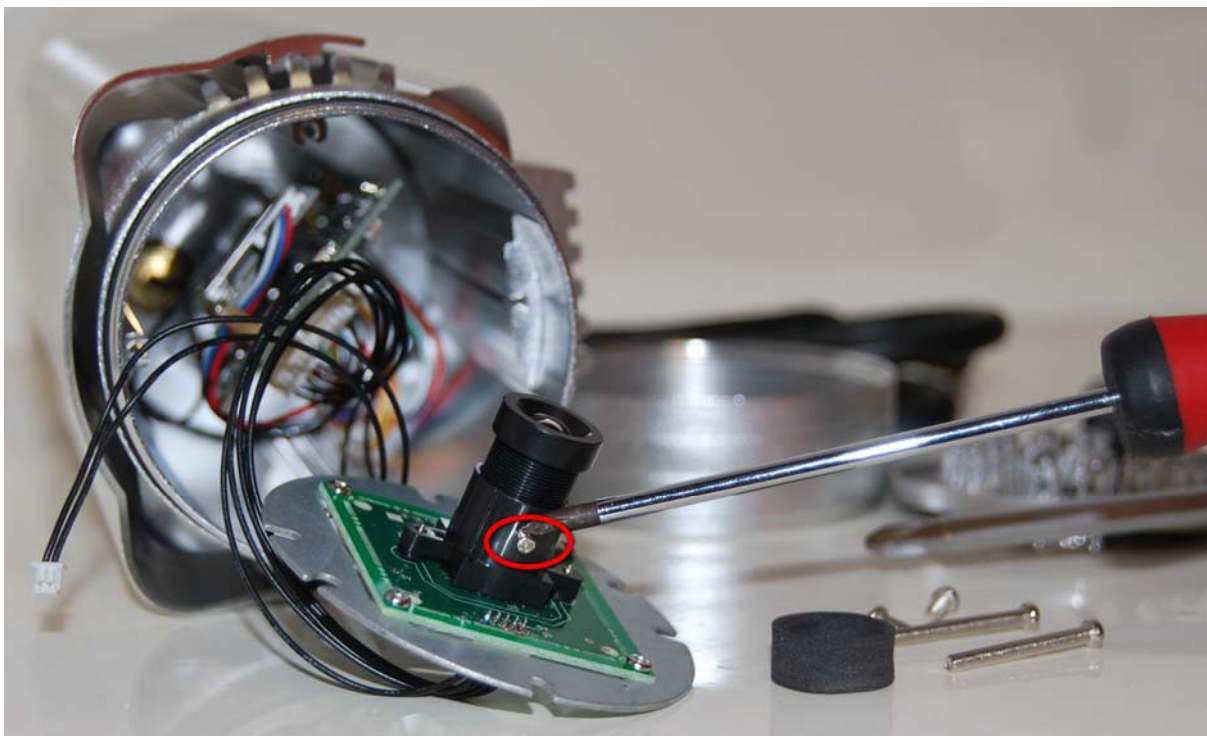


Picture 7

6. Loosen the screw which used to fix lens and take off the 6mm lens, then install the 3.6mm lens.

Toward the camera to something around 1~2m and rotate the lens to adjust focus, until the video is clear enough.

Fix the screw on the new lens after finish adjusting focus.



Picture 8

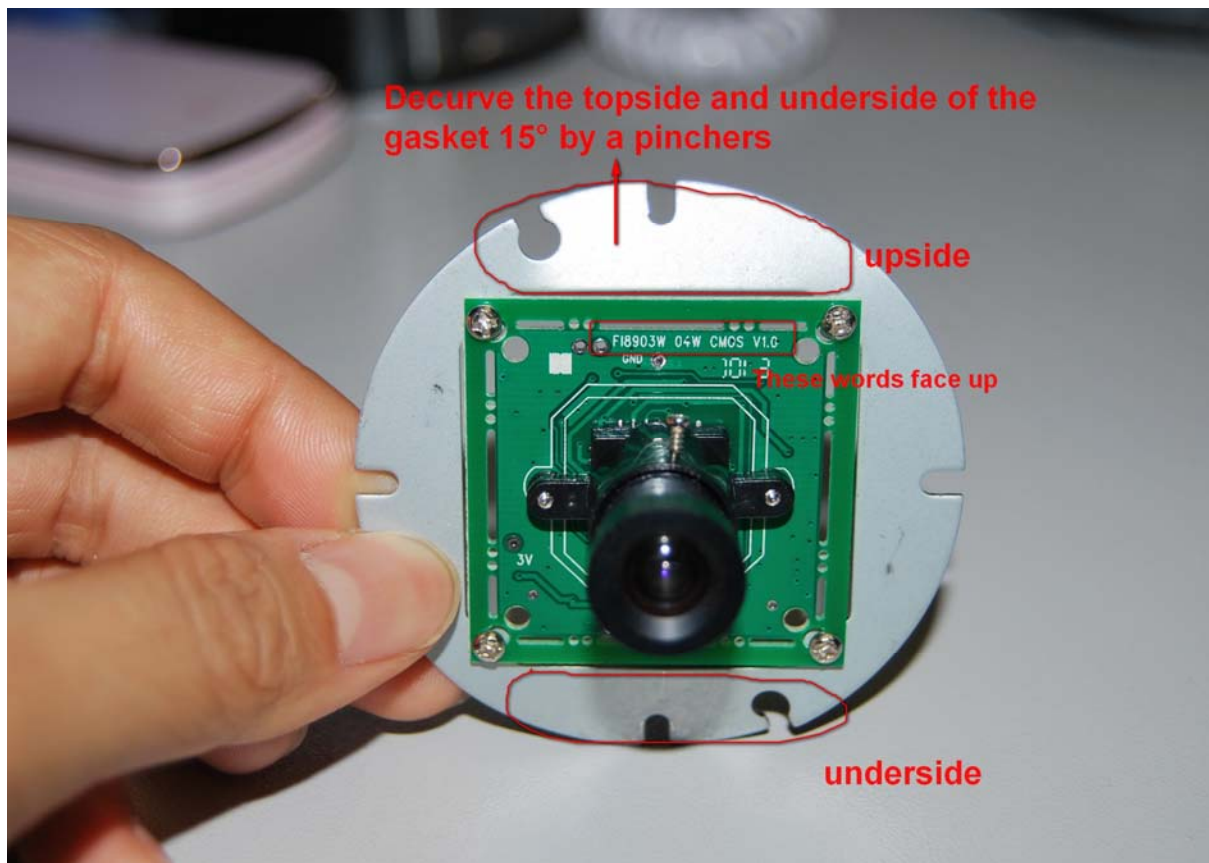


Picture 9

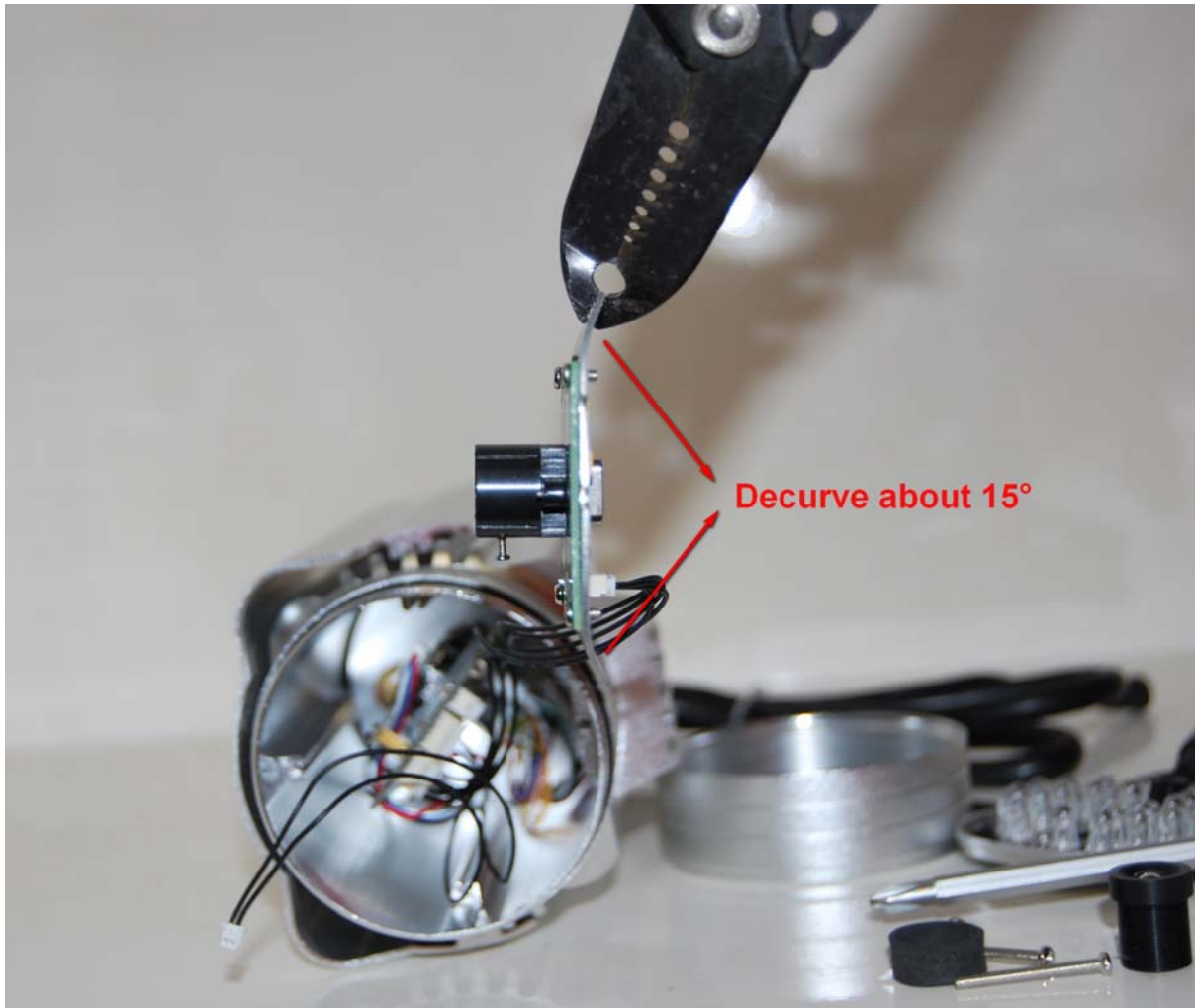


Picture 10

7. Decurve the topside and underside of the gasket 15° by a pinchers, then fix the lens board on the body, install back all the other parts.



Picture 11



Picture 12